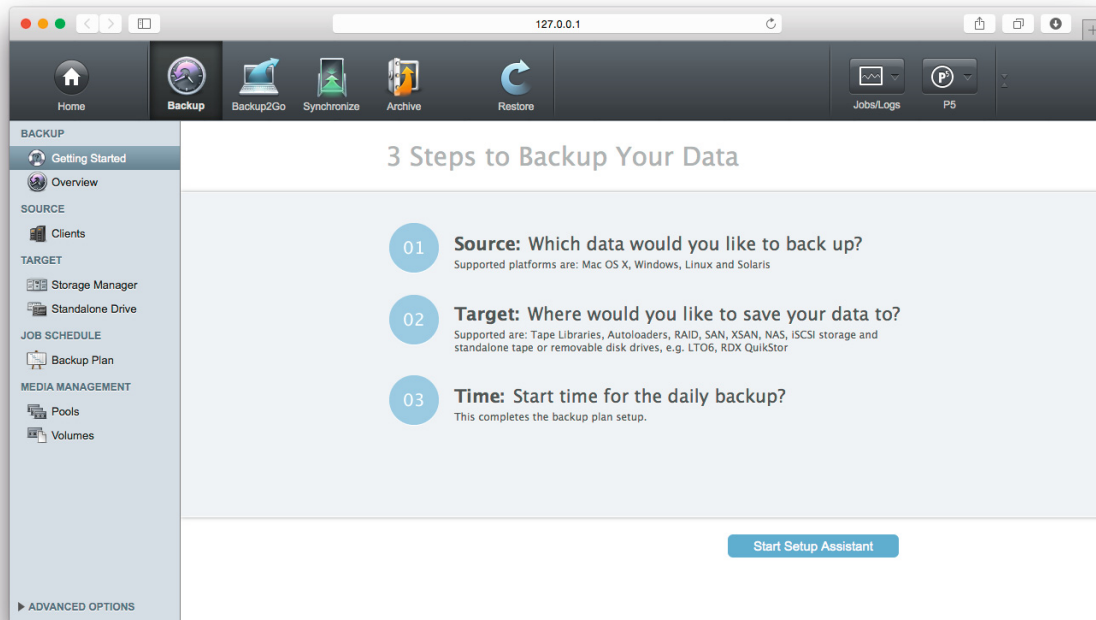




# Archiware P5 Backup



Archiware P5 Backup is the automatic, high performance backup and restore solution for saving data to tape or disk.

### Easy Administration. Anyplace. Anytime.

Archiware's browser based interface enables fast and simple configuration, administration and monitoring – independent of your location. With the new setup assistant, the first backup can be set up and run within minutes.

The administrator can assign user rights to search, browse and/or restore from backup

### Security and reliability

#### Maximum Security

To ensure maximum data security, a backup clone on a second tape can be created for offsite storage and disaster recovery. Encryption options protect your data during transfer and on the media.

#### Minimal Use of Resources

Archiware P5 Backup offers options for full and incremental backups. Both types can be combined to achieve maximum data security with minimal use of resources, e.g. incremental backups on weekdays and full backups on the weekend.

**Server Backup to Disk and Tape**  
P5 Backup

➔

**Nearline and Offline Backup**

- ✓ Versions & Snapshots
- ✓ Interruptible Backup
- ✓ User Restore
- ✓ Long Retention & Offsite Storage

- Maximum security
- Minimum Administration

- Maximum speed
- Full flexibility

#### Interruptible Backup

Interruptions will be filled in automatically with the next run. All partial backups are restorable.



# Archiware P5 Backup



## Maximum speed

### Maximum performance through Parallelization

P5 Backup supports multiple drives, simultaneous tasks and clients. Large data sets can be backed up in the shortest time possible.

### Quick restore: Block positioning

Archiware's block-direct positioning allows for fast restore as no sequential seeking takes place on the medium.

## Full flexibility

### Platform independence

Archiware P5 supports all relevant operating systems: Mac, Windows, Linux, FreeBSD and Solaris.

Compatibility with all major storage technologies - direct attached storage, NAS, SAN, Tape drives and Tape libraries - enables maximum flexibility. Data can be restored on any platform since Archiware uses a platform neutral format.

### Scalable & modular design:

#### Growing with your requirements

There are no limits to possible growth, from single servers to a server farm and from Terabyte to Petabytes.

Further Archiware products, hardware, media etc. can be added at any time and licenses can be extended to accommodate any infrastructure growth.

## Archiware P5

Operating system requirements	Hardware requirements
<b>Mac OS X</b>	<b>Memory</b>
Intel 10.6 - 10.10	1 GB+
<b>Windows</b>	<b>Hard disk</b>
Server 2008R2, 2012R1/R2, Windows 7/8/8.1 as Backup2Go Server: Windows 2008R and Windows 7	200 MB for Installation + variable (for backup/archive indexes)
<b>Linux</b>	<b>Browser requirements</b>
Kernel 2.6.4+ (x86) 32-Bit or 64-Bit For FS-events with inotify, Kernel 2.6.13+ required as Backup2Go Server: Btrfs 0.19+	Safari 5.1+, FireFox 3.5+, Chrome 4+, Internet Explorer 10+
<b>Solaris</b>	
Sparc Solaris 2.8+, x86 Solaris 2.10+ <b>Note: The language package Unicode UTF-8 is required.</b>	
<b>FreeBSD</b>	
9.0 (32-Bit), 9.2 (64-Bit)	
<b>Virtualization</b>	
x86 - VMware, Parallels, Xen, Hyper-V	